



**WALK TO END
ALZHEIMER'S**
ALZHEIMER'S  ASSOCIATION®

State College

Event Guide

Saturday, October 26th, 2024

Medlar Field

State College, PA

24/7 HELPLINE
800-272-3900

alz.org



Alzheimer's Isn't Stopping and Neither Are We! Thank you for Joining the Fight!

Our Walk is made possible through the generous support of our community - we appreciate your investment in our vision of a world without Alzheimer's and other dementias! Enclosed you will find important Walk day details, but please contact us with any questions or concerns.

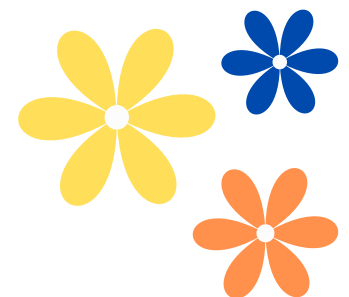
Ahead of the event there are several ways you can streamline your morning by donating and registering online!

MOBILE DEPOSIT your checks using the Walk to End Alzheimer's App!

DONATE ONLINE by visiting act.alz.org/statecollege

MAIL DONATIONS TO:

Walk to End Alzheimer's - State College
(YOUR TEAM NAME HERE)
399 Market Street
Suite 250
Philadelphia, PA 19106





SCHEDULE OF EVENTS

8:15AM - Registration Opens

- Pre-event festivities - food trucks, music, photos, sponsors!

9:00 AM - Opening Ceremony & Promise Garden Ceremony

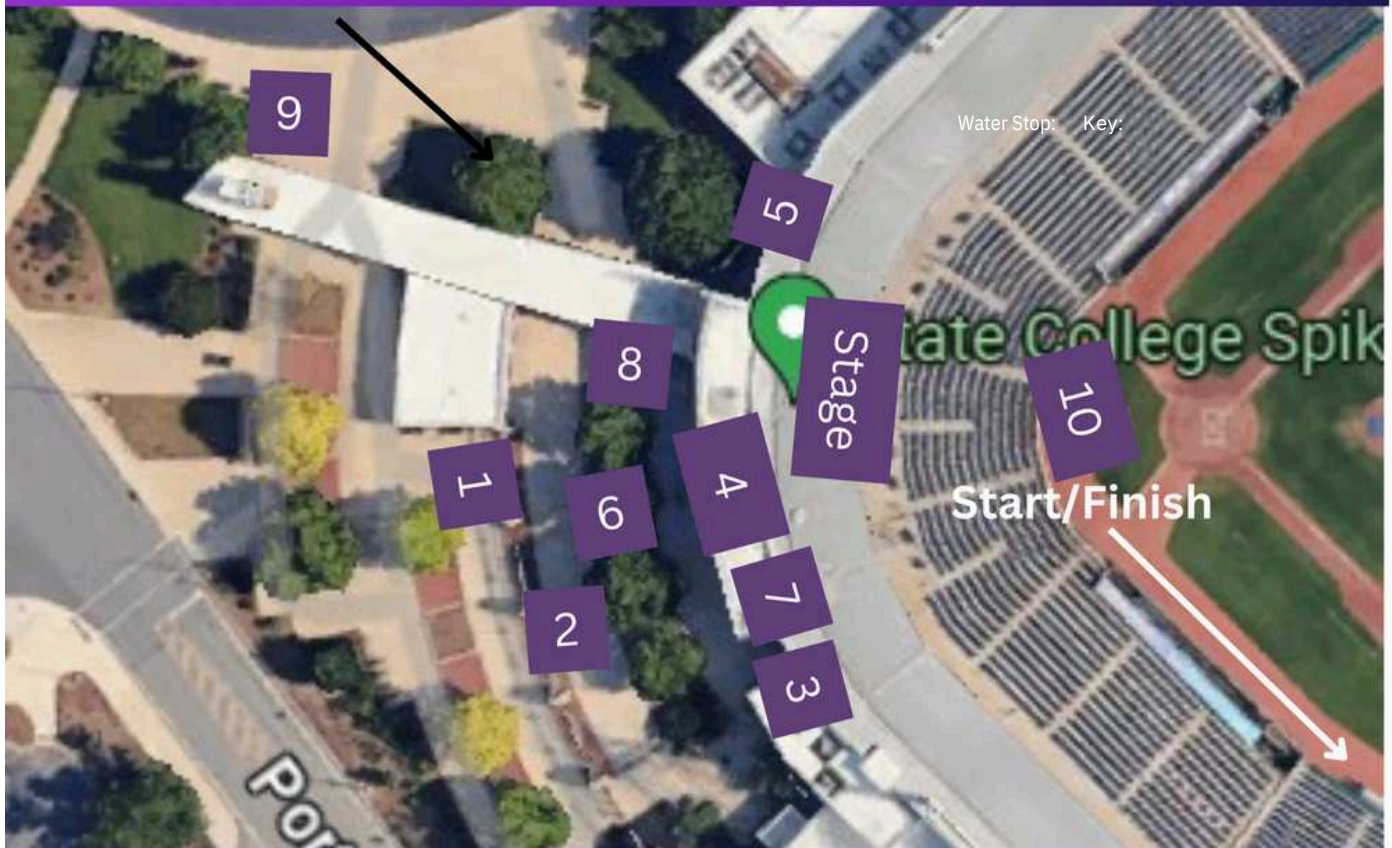
- Walk begins immediately following the ceremony

9:15 AM - Walk

- Take advantage of our small & larger loop while holding your flower high to raise awareness for the Alzheimer's Association

If you need to register the day of the event or if you have donations to drop off please proceed to the Check-In/Registration Tent.

2024 STATE COLLEGE WTEA MAP



1. Check In

2. Tribute Wall

3. Champions Village

4. Mission Area/Nat Teams

5. Refreshments/Water

6. Kids Area

7. Photo Area

8. Promise Garden

9. Parking Area/Sponsor

10. Start/Finish



PROMISE GARDEN

On Walk day, participants have the opportunity to select a promise flower. To help facilitate the process, please identify the flower color that aligns with connection to the Walk. These will be used during our opening ceremony.

Promise Garden Flowers

- **BLUE** | Living with Alzheimer's or dementia
- **PURPLE** | Lost a loved one to Alzheimer's or dementia
- **YELLOW** | Caring for someone with Alzheimer's or dementia
- **ORANGE** | I do not have a direct connection to Alzheimer's or dementia but support the vision for a world without these diseases

WALK T-SHIRTS

You can still earn your 2024 Walk to End Alzheimer's t-shirt!

Those participants who earned their t-shirts after October 5th, 2024, will receive their shirt after event day. Multiple post-walk mailings of shirts will take place to ensure everyone who earns a 2024 Walk t-shirt receives it. ***All t-shirts will be mailed to the address on file therefore, be sure to update your address on your participant page.***

CHAMPIONS CLUB

All Walk to End Alzheimer's participants that raised at least \$500 as an individual joins the ranks of the Walk to End Alzheimer's Champions Club! Raising \$1,000 or more as an individual will send you to the rank of Grand Champion. Additionally, raising \$ 2,500 or more as an individual will name you as Elite Grand Champion! All of our Champions will be recognized on Walk Day with a sign in our Champions Garden.

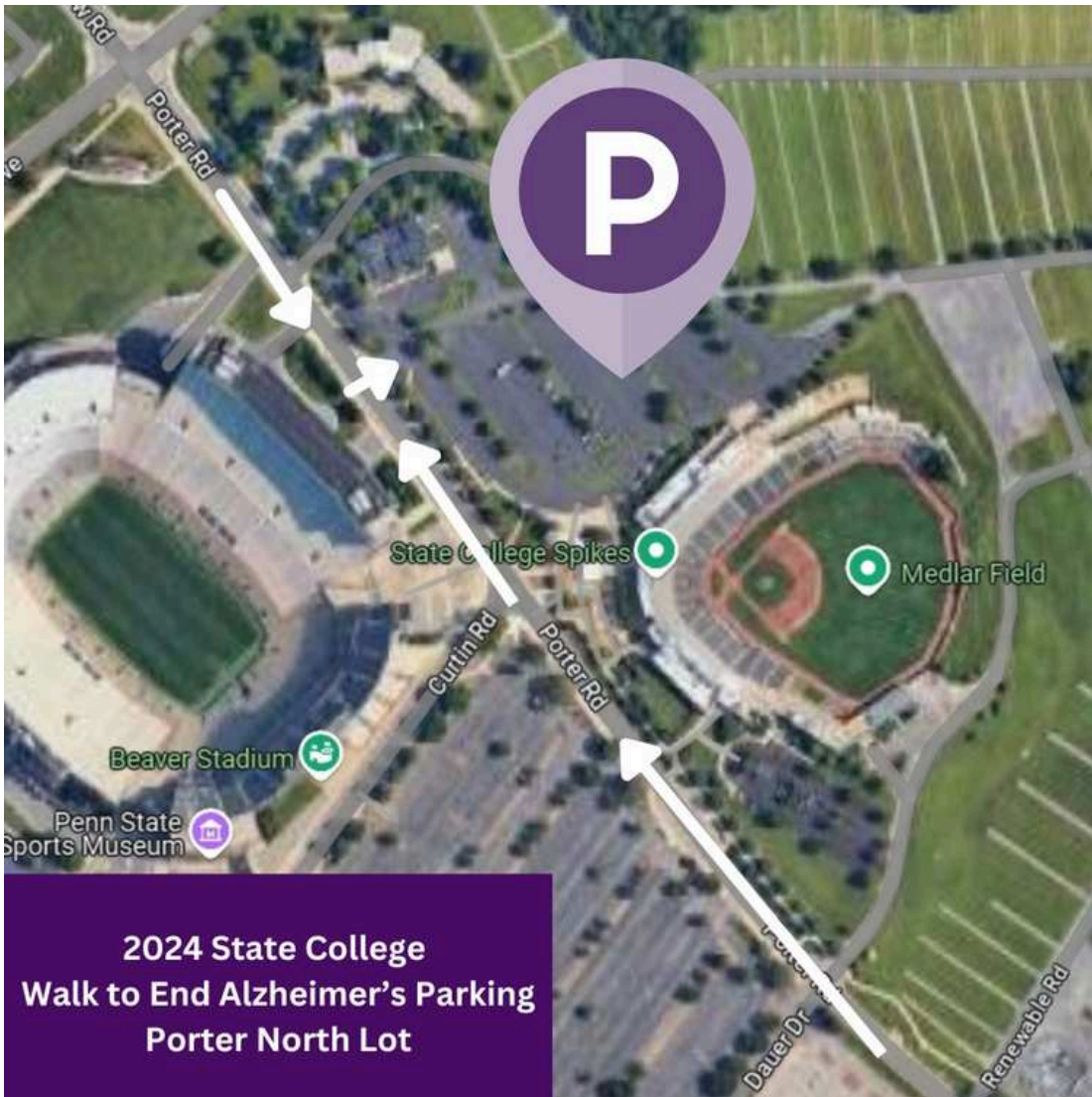


2024 Walk to End Alzheimer's — State College Route





2024 Walk to End Alzheimer's State College Parking





2024 Walk to End Alzheimer's Road Map





OTHER DETAILS

- Dress weather appropriate; our event is rain or shine!
- Light refreshments will be provided including water, granola bars, etc.
- We thank you for not smoking at our event.
- Pets are permitted in the public property areas of our event. Please ensure that your pet is friendly and comfortable in large crowds. Any pets who do attend must be leashed and cleaned up after.

