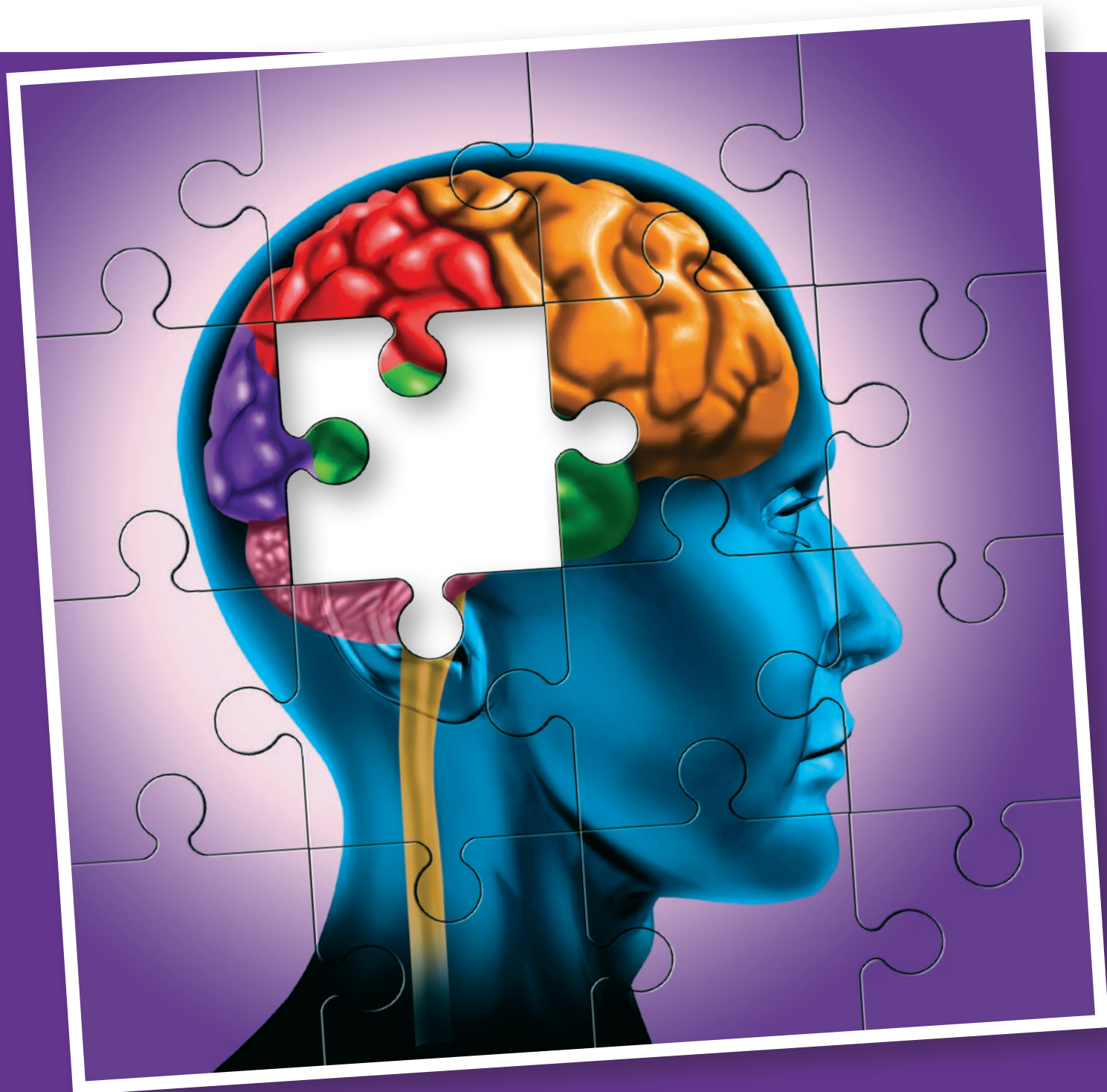
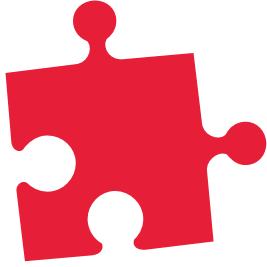
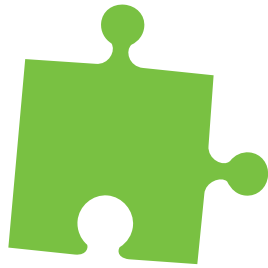


2015 STATE PUBLIC POLICY PLATFORM

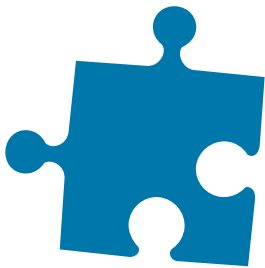




More than half a million Californians are living with Alzheimer's disease today



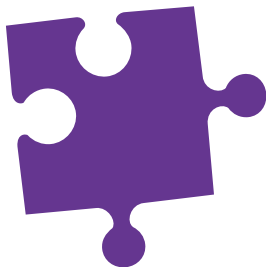
Every 67 seconds another individual in California develops Alzheimer's disease



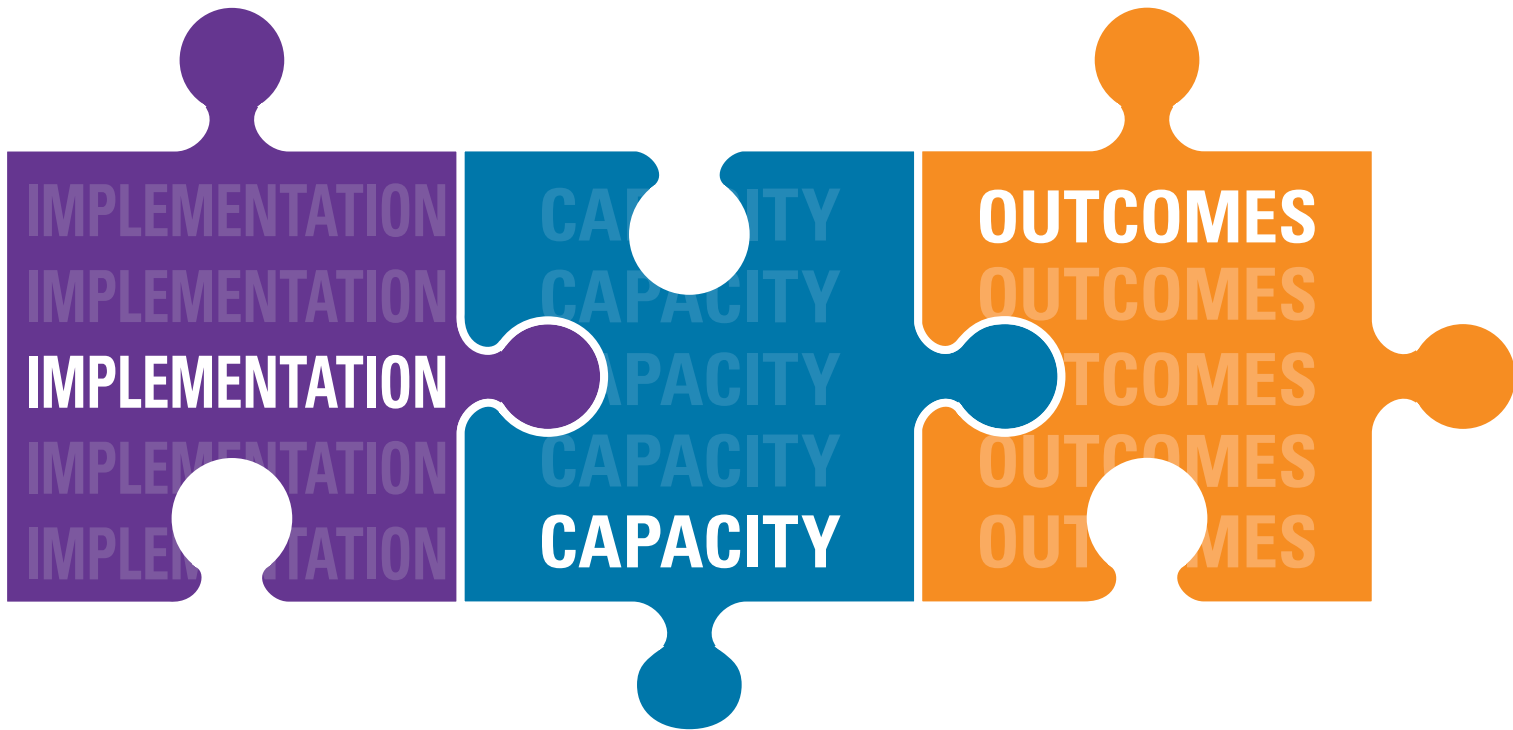
California families contribute \$2.2 billion in unpaid care to their loved ones – more than government sources pay for direct Alzheimer's and dementia care costs



Ranked as the 5th leading cause of death in California, Alzheimer's is the only disease without a known cause, prevention or cure



Alzheimer's is the most expensive disease in America, costing Medicaid and Medicare more than heart disease and cancer



Take Legislative Action on California's Alzheimer's Disease State Plan to Achieve Statewide Goals

- Ensure access to high quality, coordinated care in the setting of choice
- Develop an Alzheimer's proficient, culturally competent workforce
- Establish a comprehensive approach to support family caregivers

Develop Capacity to Deliver Long-Term Services and Supports to Californians Living with Alzheimer's Disease and Their Families

- Enhance state-funded programs serving persons with dementia
- Expand waiver programs to improve access
- Replicate successful pilot programs statewide

Adopt Data-Driven Public Health Strategies to Combat Alzheimer's Disease

- Strengthen data collection to measure the public health impact of Alzheimer's disease
 - Promote screening, detection and diagnosis of cognitive impairments
 - Invest in physician practice guidelines to improve Alzheimer's treatment, care and support
-

Alzheimer's Association Chapters and Regions They Serve

CALIFORNIA SOUTHLAND

4221 Wilshire Blvd, Suite 400
Los Angeles, CA 90010
(323) 938-3379

CENTRAL

1528 Chapala St., Suite 204
Santa Barbara, CA 93101
(805) 892-4259

NORTHERN CALIFORNIA

2290 North 1st Street, Suite 101
San Jose, CA 95131
(408) 372-9900

ORANGE COUNTY

2515 McCabe Way, Suite 200
Irvine, CA 92614
(949) 955-9000

SAN DIEGO/IMPERIAL

6632 Convoy Court
San Diego, CA 92111
(858) 492-4400

CHICO

2105 Forest Ave, Suite 130
Chico, CA 95928
(530) 895-9661

COACHELLA VALLEY

69730 Highway 111, Suite 100
Rancho Mirage, CA 92270
(760) 328-6767

FRESNO

1155 W. Shaw Ave, Suite 103
Fresno, CA 93711
(408) 372-9900

INLAND EMPIRE

9213 Archibald Ave
Rancho Cucamonga, CA 91730
(909) 944-9680

KERN COUNTY

201 New Stine Road
Bakersfield, CA 93309
(661) 794-6948

LAFAYETTE

3675 Mt. Diablo Blvd., Suite 250
Lafayette, CA 94549
(925) 284-7942

LOS ANGELES

133 North Sunol Dr., Suite 237
Los Angeles, CA 90063
(323) 881-0574

MONTEREY

21 Lower Ragsdale Dr.
Monterey, CA 93940
(831) 647-9890

SACRAMENTO

1455 Response Road, Suite 190
Sacramento, CA 95815
(916) 930-9080

SAN FERNANDO VALLEY

21515 Vanowen St., Suite 120
Canoga Park, CA 91303
(818) 830-8590

SAN LUIS OBISPO

3232 S. Higuera Street
San Luis Obispo, CA 93401
(805) 547-3830

SAN RAFAEL

4340 Redwood Hwy., Suite D314
San Rafael, CA 94903
(415) 472-4340

SANTA CRUZ

1777-A Capitola Road
Santa Cruz, CA 95062
(831) 464-9982

SANTA MARIA

120 East Jones Street, Suite 113
Santa Maria, CA 93454
(805) 636-6432

SANTA ROSA

1211 North Dutton Ave., Suite A
Santa Rosa, CA 95401
(707) 573-1210

VENTURA COUNTY

145 Hodencamp Rd., Suite 205
Thousand Oaks, CA 91360
(805) 494-5200

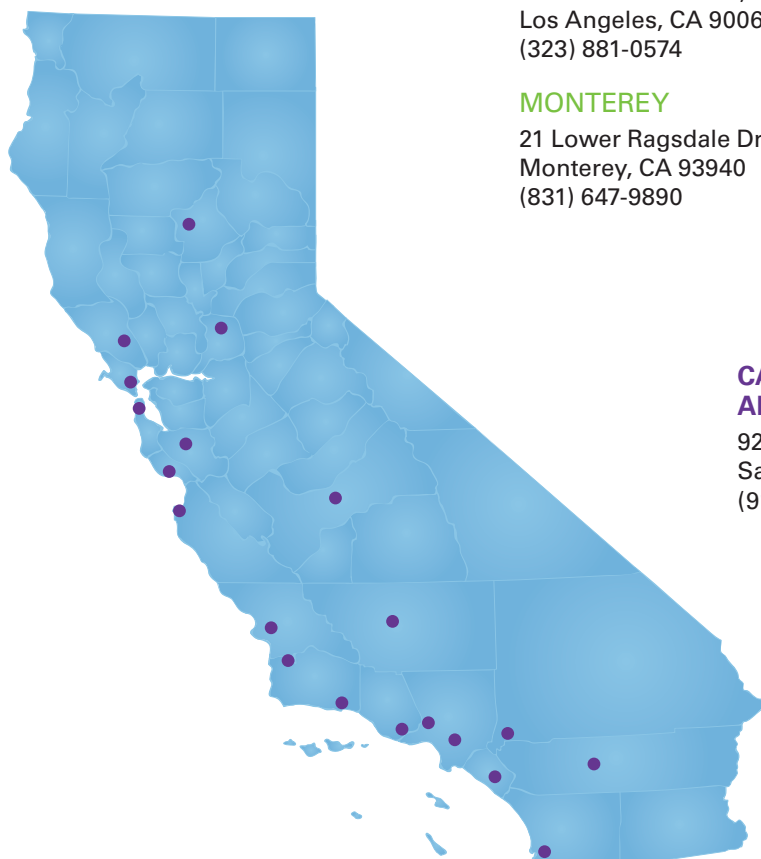
CALIFORNIA COUNCIL OF THE ALZHEIMER'S ASSOCIATION

921 11th Street, Suite 601
Sacramento, CA 95814
(916) 447-2731

24/7 HELPLINE

1-800-272-3900

www.alz.org



alzheimer's  association®

THE BRAINS BEHIND SAVING YOURS.™