

SUBJECTIVE COGNITIVE DECLINE

among African Americans

Data from the 2015 Behavioral Risk Factor Surveillance System



1 in 7

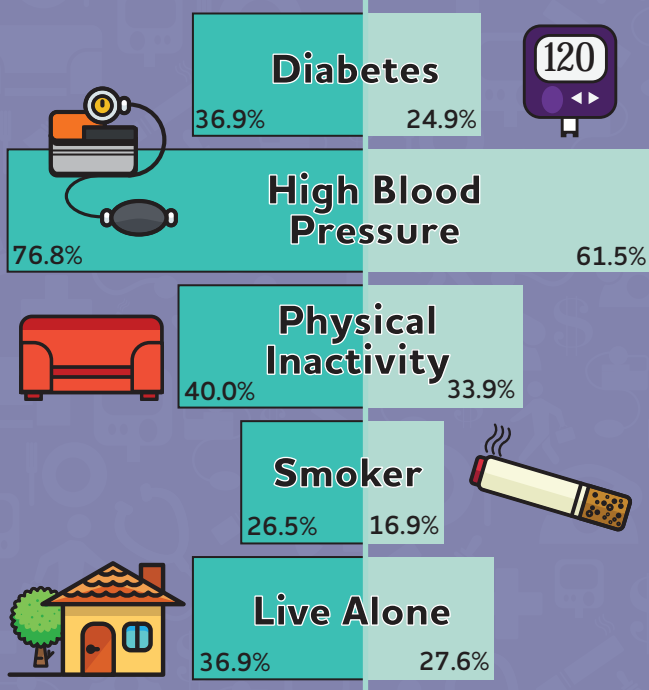
African Americans aged 45+ have **Subjective Cognitive Decline**.

SCD is self-reported **MEMORY PROBLEMS** that have gotten worse over the past year.

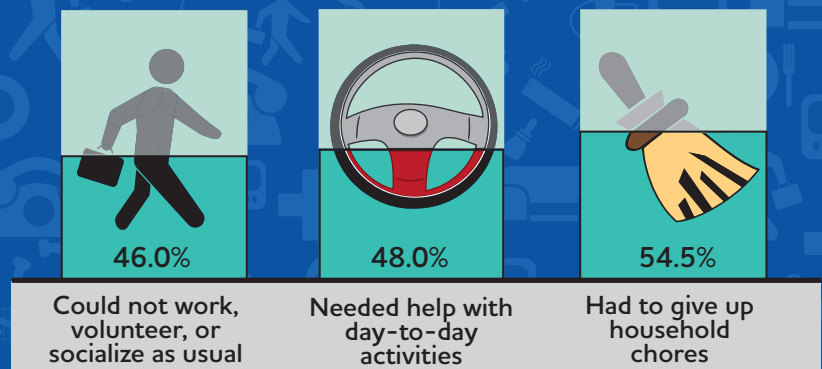
African Americans with SCD often have other health challenges that may complicate care.

African Americans with SCD

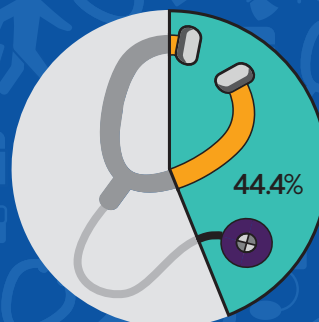
African Americans without SCD



SCD IMPACTS EVERYDAY LIFE.



YET, LESS THAN HALF HAVE TALKED TO A DOCTOR ABOUT IT.



And, of those who have, **ONE in THREE** had trouble paying for medical care.



For more information:

www.alz.org/publichealth

alzheimer's association®